

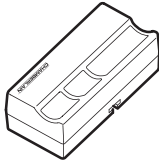
# CHAMBERLAIN™

## 433MHz Billion Code Remote Controls

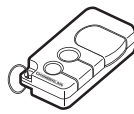
4333A – Three-function billion code remote control

4335A – Three-function billion code mini remote control

4333A



4335A



Can be used with B&D CAD4, CADP, CADP Diamond, WQ and PD, CAD5 and CADR

FIRMAMATIC FAM 5, FAM 4, FAM R, CAD FIRMAMATIC EASYLIFTER EL4, EL5, EL R CAD EASYLIFTER D

Chamberlain do not recommend or endorse this accessory's use with products anything other than garage door motors.



**DO NOT operate your garage door unless it is in full view and clear of obstruction and properly adjusted. No one should enter or leave garage whilst door is in motion. Do not allow children to operate push button(s) or remote. Do not allow children to play near door.**

### ADDING REMOTE TO CAD 4,5, P AND DIAMOND SERIES MOTORS.

1. *Figure 1.* Press and **hold** the selected remote control push button 1.
2. Press and release the orange "Learn" button 1 on the opener panel. The opener light will flash once. Release the remote push button. If no light bulb is not installed, two clicks will be heard.

### FOR OTHER MODEL

Press and hold down the button you wish to use to open the door. Press the "CODE SET" and release. Once the indicator light goes out or the unit clicks twice (where no light installed) your code has been learned.

Now the opener will operate when the remote push button is pressed.

**If you release the remote control push button before the opener light flashes, the opener has not accepted the code.**

### To Erase All Programmed Codes

Press and hold the "Learn" or "code set" button on the opener panel until the indicator light turns off (about 6-10 seconds).

**Note: This procedure erases all codes from the operators memory.**

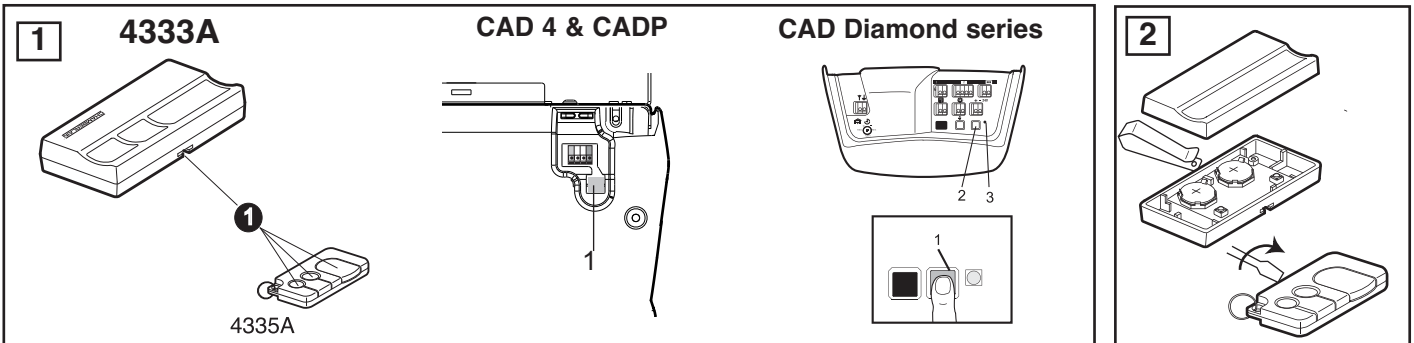
- To reprogram valid remotes into your opener, follow the procedure laid out in Steps 1 and 2 above.

The lithium batteries should produce power for up to 5 years. To replace batteries, use the visor clip or screwdriver blade to pry open the case, as shown *Figure 2.* ("Open" location is stamped on back.)

Model 4330A: Insert batteries 10A20 (CR2032) positive side **up.**

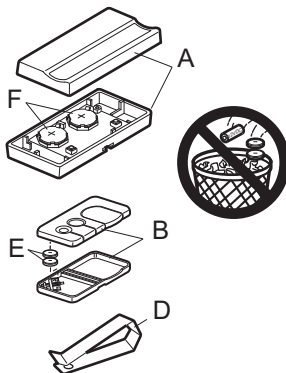
Model 4335A: Insert batteries 10A19 (CR2016) positive side **down.**

To replace cover, snap shut along both sides.



### Replacement Parts

- (A) 41A4333A
- (B) 41A4335A
- Housing Only (no circuit board)
- (D) 29C128
- (E) 10A19 (2)
- (F) 10A20 (2)



Chamberlain Australia Pty Ltd  
PO Box 1446  
Lane Cove NSW 1595

Chamberlain New Zealand Ltd  
P.O. Box 100-221  
North Shore 0745  
www.chamberlainnz.com

